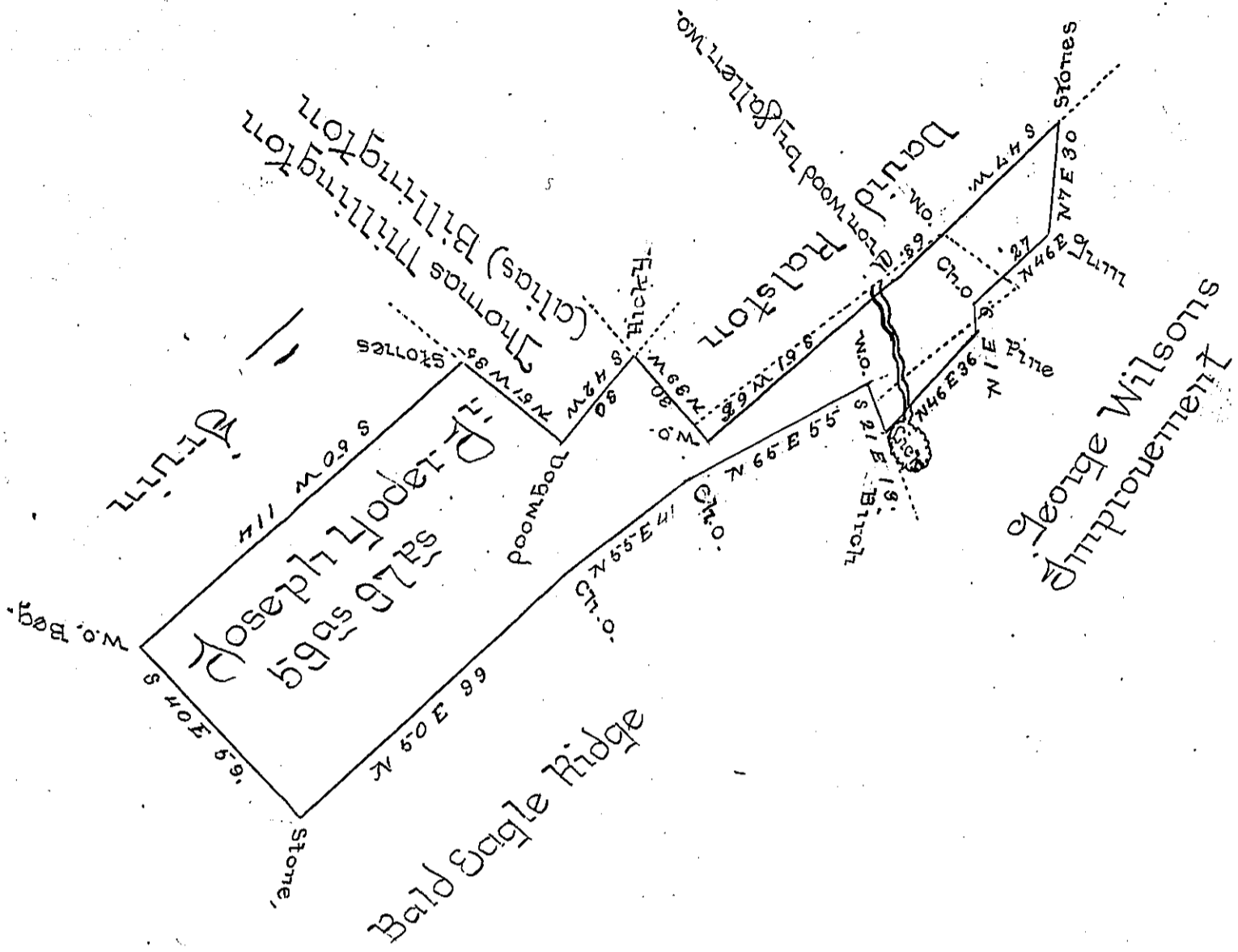


Note The dotted lines show the interference of a survey, the owner not known.



The Draught of a tract of land situate in Hallymoon -
 Township Centre County containing fifty Nine Acres
 Ninety Seven perches and allowance of six per Cent
 &c. Surveyed the 14th day of June 1816, in pursuance
 of a warrant granted to Joseph Hoder J^r dated the 14th
 day of May 1816.

Wm Kerr D.S.

To Richard T. Beech Esquire }
 Surveyor General of Pennsylvania }

IN TESTIMONY that the above is a copy of the original remaining on file in the
 Department of Internal Affairs of Pennsylvania, made con-
 formably to an Act of Assembly approved the 16th day of
 February, 1833, I have hereunto set my Hand and caused
 the Seal of said Department to be affixed at Harrisburg, this
 seventh day of December 1897.

James W. Latta
 Secretary of Internal Affairs.